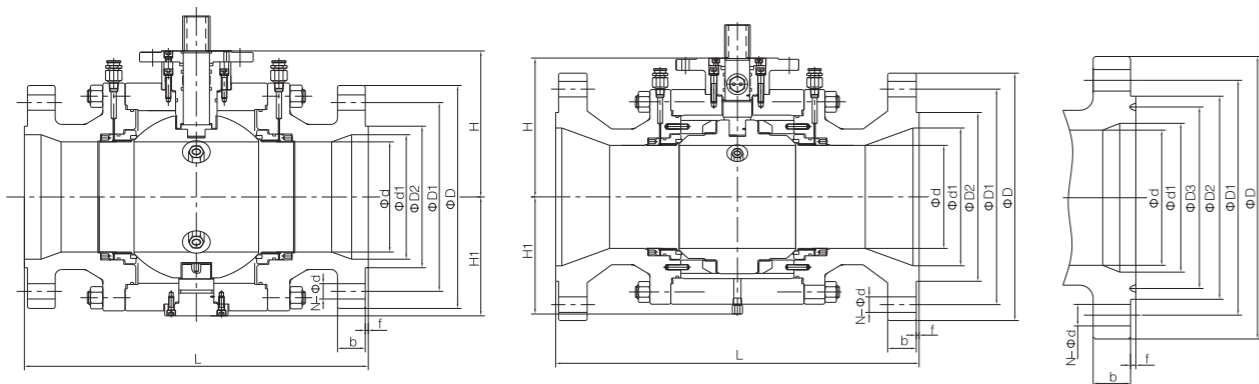


Trunnion Mounted Ball Valve



Model NO.	Pressure rating Class	Nominal Diameter		d	d1	Flange		Butt welding L(BW)	Raised face flange						General		Support Board		Weight(kg)		
		NPS	DN			L(RF)	L(RTJ)		D	D1	D2	D3	f	b	N-Φd	H	H1	H	H1	General	Support Board
Q47F-1500LB-R	1500	3"x2"	80	50	75	470	473	470	265	203.2	168	136.53	7.92	38.5	8-Φ32	126.5	105	/	/	2	/
		4"x3"	100	74	100	546	549	546	310	241.3	194	161.93	7.92	54	8-Φ35	166	149	/	/	195	205
		6"x4"	150	100	144	705	711	705	395	317.5	248	211.14	9.53	83	12-Φ39	219	178	/	/	270	284
		8"x6"	200	144	192	832	841	832	485	393.7	318	269.88	11.13	92	12-Φ45	268	227	/	/	586	615
		10"x8"	250	192	239	991	1000	991	585	482.6	371	232.85	11.13	108	12-Φ51	303	267	305	270	1010	1061
		12"x10"	300	239	287	1130	1146	1130	675	571.5	438	381	14.27	124	16-Φ54	358	323	358	336	1760	1848
		14"x10"	350	239	315	1257	1276	1257	750	635	489	419.1	15.88	134	16-Φ60	358	323	358	336	2010	2238
		14"x12"	350	287	315	1257	1276	1257	750	635	489	419.1	15.88	134	16-Φ60	414	381	414	395	2680	2840
		16"x12"	400	287	360	1384	1407	1384	825	704.8	546	469.9	17.48	146.5	16-Φ67	414	381	414	395	2680	3180
		16"x14"	400	315	360	1384	1407	1384	825	704.8	546	469.9	17.48	146.5	16-Φ67	471	432	471	441	3530	3850
		18"x16"	450	360	406	1537	1559	/	915	774.7	613	533.4	17.48	162	16-Φ73	498	453	498	456	5030	5282
20"x16"	500	360	454	1664	1686	/	985	831.8	673	584.2	17.48	178	16-Φ79	498	453	498	355	/	/		
20"x18"	500	406	454	1664	1686	/	951	831.8	673	584.2	17.48	178	16-Φ79	570	530	570	456	5380	5790		
Q47F-2500LB-R	2500	3"x2"	80	42	62	578	584	578	305	228.6	168	127	9.53	67	8-Φ35	149	123	/	/	157	165
		4"x3"	100	62	87	673	683	673	355	273	203	157.18	11.13	76.5	8-Φ42	215	171	/	/	260	273
		6"x4"	150	87	131	914	927	914	485	368.3	279	228.6	12.7	108	8-Φ54	245	206	/	/	548	575
		8"x6"	200	131	179	1022	1038	1022	550	438.2	340	279.4	14.27	127	12-Φ54	306	263	306	265	1100	1155
		10"x8"	250	179	223	1270	1292	1270	675	539.8	425	342.9	17.48	166	12-Φ67	361	330	361	336	1890	1985
		12"x10"	300	223	265	1422	1445	1422	760	619.1	495	406.4	17.48	185	12-Φ74	426	388	426	394	2850	2993

Note: The weight value is only for flanged valve. Please consult our factory for higher nominal diameter or weight. Any modification to size H, H1, and weight will not be notified otherwise.



Double Block And Bleed Ball Valve Series

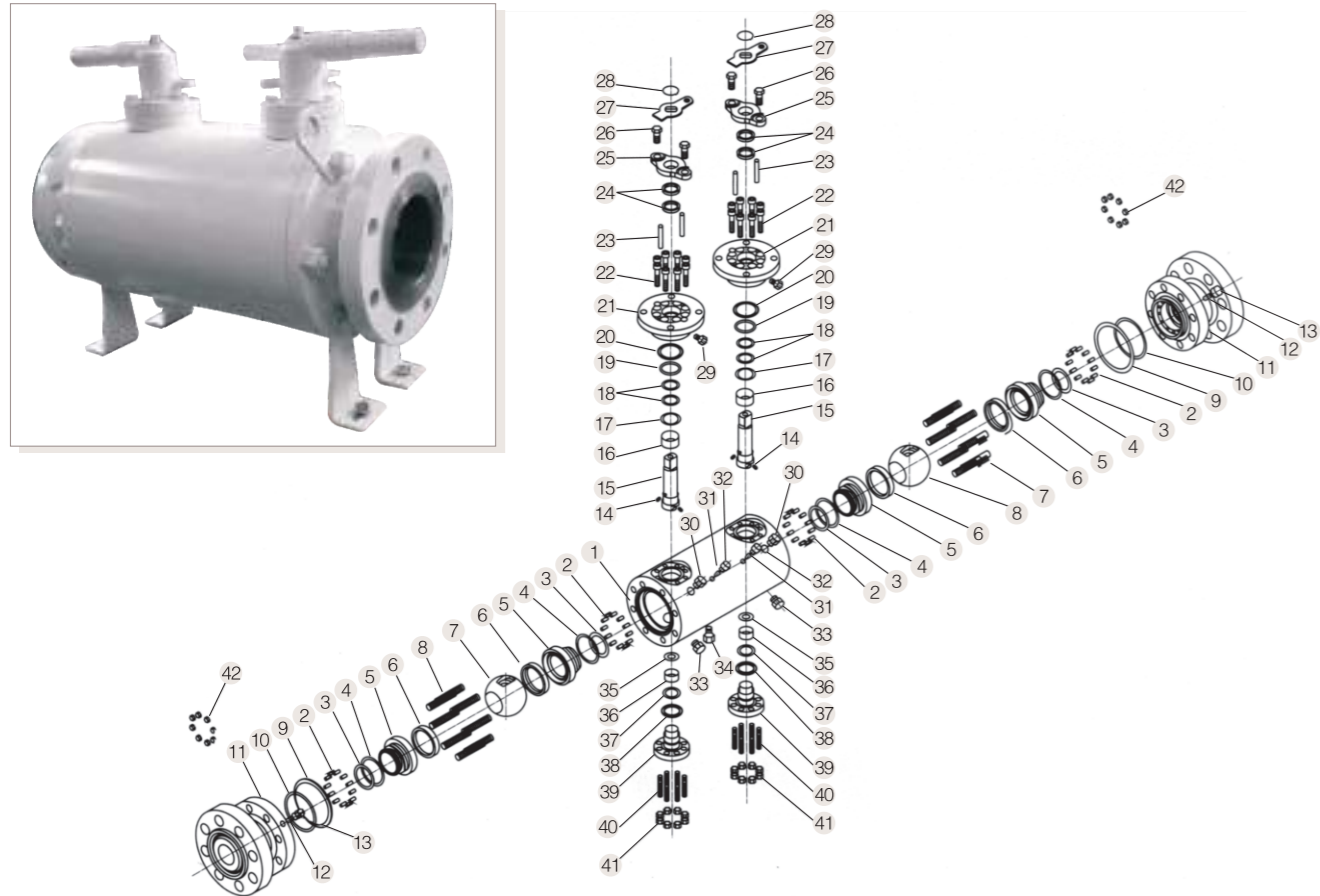


Double Block And Bleed Ball Valve Series

Pressure Class : Class 150~2500
 Size Range : 1/2"~36"
 API Standards: 6D
 ASME B 16.34

1	Body
2	Spring
3	Anti-fire packing
4	O-ring
5	Seat ring
6	Seat
7	Ball
8	Stud
9	Anti-fire gasket
10	O-ring
11	Bonnet
12	Check valve
13	Sealant injection valve
14	Anti-static device
15	Stem
16	Sliding bearing
17	Thrust bearing
18	O-ring
19	O-ring
20	Anti-fire gasket
21	Seal gland

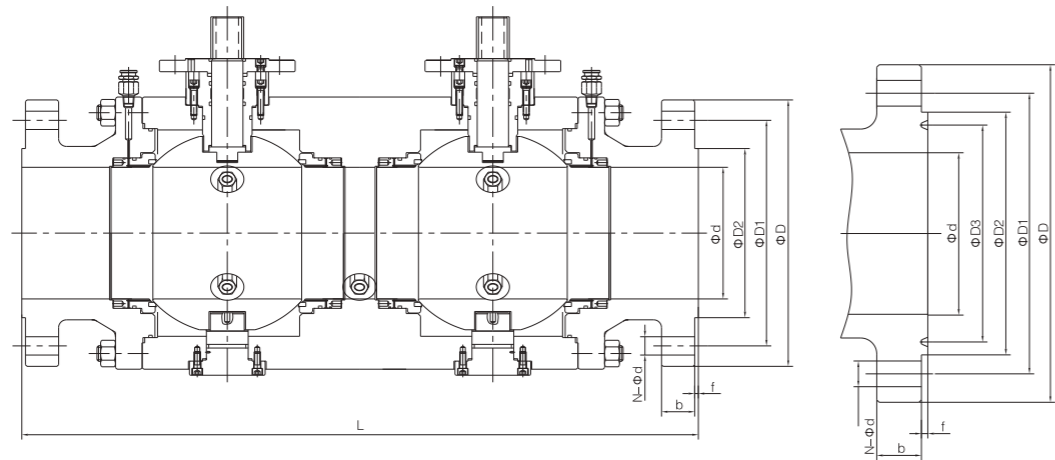
22	Socket head cap screw
23	Pin
24	Packing
25	Packing gland
26	Hexagon bolt
27	Stopper
28	Retainer ring
29	Sealant injection valve
30	Air release valve
31	Check valve
32	Sealant injection valve
33	Drainage valve
34	Drainage valve
35	Thrust bearing
36	Sliding bearing
37	O-ring
38	Anti-fire gasket
39	Lower cover
40	Stud
41	Hexagon nut
42	Hexagon nut



Double block and bleed valves

Nominal diameter (in)		NPS 2-16				
Nominal Pressure (MPa)		Class150-Class2500				
No.	Part Name	Material				
		Carbon steel	Stainless steel			
1	Body	ASTM A105	ASTM A182 304	ASTM A182 316	ASTM A182 304L	ASTM A182 316L
2	Spring	17-7PH				
3	Anti-fire packing	Graphite				
4	O-ring	VITON	VITON	VITON	VITON	VITON
5	Seat ring	ASTM A105 · ENP	ASTM A182 304	ASTM A182 316	ASTM A182 304L	ASTM A182 316L
6	Seat	PTFE/NYLON/PEEK/PPL				
7	Ball	ASTM A105 · ENP	ASTM A182 304	ASTM A182 316	ASTM A182 304L	ASTM A182 316L
8	Stud	A193 B7M	A320 B8	A320 B8M	A320 B8	A320 B8M
9	Anti-fire gasket	SST+Graphite				
10	O-ring	VITON				
11	Bonnet	ASTM A105	ASTM A182 304	ASTM A182 316	ASTM A182 304L	ASTM A182 316L
12	Check valve	Combined parts	Combined parts	Combined parts	Combined parts	Combined parts
13	Sealant injection valve	Combined parts	Combined parts	Combined parts	Combined parts	Combined parts
14	Anti-static device	Combined parts	Combined parts	Combined parts	Combined parts	Combined parts
15	Stem	ASTM A182 F6a	ASTM A182 304	ASTM A182 316	ASTM A182 304L	ASTM A182 316L
16	Sliding bearing	Metal+PTFE	Metal+PTFE	Metal+PTFE	Metal+PTFE	Metal+PTFE
17	Thrust bearing	PTFE				
18	O-ring	VITON				
19	O-ring	VITON				
20	Anti-fire gasket	SST+Graphite				
21	Seal gland	ASTM A105 · ENP	ASTM A182 304	ASTM A182 316	ASTM A182 304L	ASTM A182 316L
22	Socket head cap screw	A193 B7M	A320 B8	A320 B8M	A320 B8	A320 B8M
23	Pin	ANSI A1035	ANSI A1035	ANSI A1035	ANSI A1035	ANSI A1035
24	Packing	Graphite	Graphite	Graphite	Graphite	Graphite
25	Packing gland	ASTM A216 WCB	ASTM A216 WCB	ASTM A216 WCB	ASTM A216 WCB	ASTM A216 WCB
26	Hexagon bolt	A193 B7M	A320 B8	A320 B8M	A320 B8	A320 B8M
27	Stopper	A3 · HZn	A3 · HZn	A3 · HZn	A3 · HZn	A3 · HZn
28	retainer ring	65Mn	65Mn	65Mn	65Mn	65Mn
29	Sealant injection valve	Combined parts	Combined parts	Combined parts	Combined parts	Combined parts
30	Air release valve	Combined parts	Combined parts	Combined parts	Combined parts	Combined parts
31	Check valve	Combined parts	Combined parts	Combined parts	Combined parts	Combined parts
32	Sealant injection valve	Combined parts	Combined parts	Combined parts	Combined parts	Combined parts
33	Drainage valve	Combined parts	Combined parts	Combined parts	Combined parts	Combined parts
34	Drainage valve	Combined parts	Combined parts	Combined parts	Combined parts	Combined parts
35	Thrust bearing	PTFE				
36	Sliding bearing	Metal+PTFE	Metal+PTFE	Metal+PTFE	Metal+PTFE	Metal+PTFE
37	O-ring	VITON				
38	Anti-fire gasket	SST+Graphite				
39	Lower cover	ASTM A105 · ENP	ASTM A182 304	ASTM A182 316	ASTM A182 304L	ASTM A182 316L
40	Stud	A193 B7M	A320 B8	A320 B8M	A320 B8	A320 B8M
41	Hexagon nut	A194-2HM	A194-8	A194-8M	A194-8	A194-8M
42	Hexagon nut	A194-2HM	A194-8	A194-8M	A194-8	A194-8M
Applicable service conditions	Applicable media	Water, steam, oil, gas, liquefied gas, natural gas, etc.	Nitric acid	Acetic acid	Strong Oxidizer	Urea
	Applicable temperature	120°C(PTFE), ≤80°C(NYLON), ≤250°C(PEEK), ≤250°C(PPL)				
Design and manufacturing	API 608, API 6D					
Face-to-face dimensions	ASME B16.10, API 6D					
Type of connection	Flange	ASME B16.5/ASME B16.47		Butt welding	ASME B16.25	
Pressure test	API 598, API6D					
Transmission mode	Manual, worm and worm gear transmission, pneumatic, electric					

Double Block And Bleed Valve

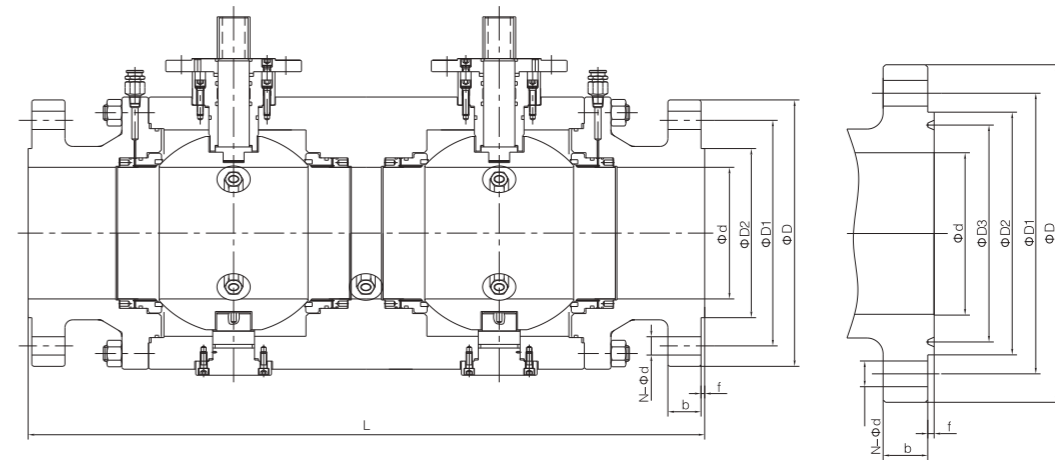


Model NO.	Pressure rating	Nominal Diameter		d	Flange		Butt welding	Raised face flange							H	H1	Weight (kg)
		NPS	DN		L(RF)	L(RTJ)		L(BW)	D	D1	D2	D3	f	b			
DBBQ47F-150LB	150	2"	50	50	356	369	394	150	120.5	92	/	2	14.5	4-φ19	93	88	Δ
		3"	80	75	457	470	537	190	152.5	127	/	2	17.5	4-φ19	118.5	117	Δ
		4"	100	100	502	514	579	230	190.5	157	/	2	22.5	8-φ19	143.5	137	Δ
		6"	150	150	787	799	850	280	241.5	216	/	2	24	8-φ22	208	178.5	Δ
		8"	200	201	902	915	966	345	298.5	270	/	2	27	8-φ22	248	235	Δ
		10"	250	252	991	1004	1017	405	362	324	/	2	29	12-φ25	294	288	Δ
		12"	300	303	1130	1142	1155	485	432	381	/	2	30.5	12-φ25	345	330	Δ
		14"	350	334	1245	1258	1321	535	476	413	/	2	33.5	12-φ29	377	360	Δ
		16"	400	385	1372	1385	1448	595	540	470	/	2	35	16-φ29	418	400	Δ
DBBQ47F-300LB	300	2"	50	50	394	410	394	165	127	92	/	2	21	8-φ19	93	88	Δ
		3"	80	75	495	510	495	210	168.5	127	/	2	27	8-φ22	118.5	117	Δ
		4"	100	100	568	587	568	255	200	157	/	2	30.5	8-φ22	143.5	137	Δ
		6"	150	150	826	842	826	320	270	216	/	2	35	12-φ22	208	178.5	Δ
		8"	200	201	991	1007	991	380	330	270	/	2	40	12-φ25	248	235	Δ
		10"	250	252	1054	1070	1054	445	387.5	327	/	2	46.5	16-φ29	294	288	Δ
		12"	300	303	1194	1210	1194	520	451	381	/	2	49.5	16-φ32	345	330	Δ
14"	350	334	1346	1362	1346	585	514.5	416	/	2	52.5	20-φ32	377	360	Δ		
16"	400	385	1473	1489	1473	650	571.5	470	/	2	56	20-φ35	423	345	Δ		
DBBQ47F-600LB	600	2"	50	50	470	473	470	165	127	92	/	7	26	8-φ19	107	91.5	Δ
		3"	80	75	610	613	610	210	168.5	127	/	7	32	8-φ22	140	119	Δ
		4"	100	100	762	765	762	275	216	157	/	7	38.5	8-φ25	164	150	Δ
		6"	150	150	978	981	978	355	292	216	/	7	48	12-φ29	224	208	Δ
		8"	200	201	1143	1147	1143	420	390	270	/	7	56	12-φ32	272	248	Δ
		10"	250	252	1372	1376	1372	510	532	324	/	7	64	16-φ35	318	303	Δ
		12"	300	303	1448	1451	1448	560	589	381	/	7	67	20-φ35	355	341	Δ
		14"	350	334	1579	1552	1549	605	527	413	/	7	70	20-φ39	390	370	Δ
16"	400	385	1778	1781	1778	685	603	470	/	7	77	20-φ41	400	415	Δ		

Δ Please consult the factory:
 Note: The weight value is only for flanged valve. Please consult our factory for higher nominal diameter or weight. Any modification to size Hand, weight will not be notified otherwise.



Double Block And Bleed Valve



Model NO.	Pressure rating	Nominal Diameter		d	Flange		Butt welding	Raised face flange							H	H1	Weight (kg)
		NPS	DN		L(RF)	L(RTJ)		L(BW)	D	D1	D2	D3	f	b			
DBBQ47F-900LB	900	2"	50	50	610	613	610	215	165	124	95.25	7.92	38.5	8-φ25	126.5	105	Δ
		3"	80	75	660	663	660	240	190.5	156	123.83	7.92	38.5	8-φ25	150	130	Δ
		4"	100	100	826	829	826	290	235	181	149.23	7.92	45	8-φ32	172.5	158	Δ
		6"	150	150	1054	1057	1054	380	317.5	241	211.12	7.92	56	12-φ32	230	210	Δ
		8"	200	201	1295	1298	1295	470	393.5	308	269.88	7.92	64	12-φ39	290	255	Δ
		10"	250	252	1473	1476	1473	545	470	362	323.85	7.92	70	16-φ39	330	316	Δ
		12"	300	303	1651	1654	1651	610	533.5	419	381	7.92	79.5	20-φ39	366	351	Δ
		14"	350	322	1880	1889	1880	640	559	467	419.1	11.13	86	20-φ42	425	376	Δ
		16"	400	373	1930	1940	1930	705	616	524	469.9	11.13	89	20-φ45	452	421	Δ
DBBQ47F-1500LB	1500	2"	50	50	610	613	610	215	165	124	85.25	7.92	38.5	8-φ25	126.5	105	Δ
		3"	80	75	826	829	826	265	203.2	168	136.53	7.92	48	8-φ32	166	149	Δ
		4"	100	100	965	968	965	310	241.3	194	161.93	7.92	54	8-φ35	219	178	Δ
		6"	150	144	1232	1238	1232	395	317.5	248	211.14	9.53	83	12-φ39	268	234	Δ
		8"	200	192	1448	1457	1448	485	393.7	318	268.88	11.13	92	12-φ45	305	270	Δ
		10"	250	239	1778	1787	1778	585	482.6	371	323.85	11.13	108	12-φ51	358	336	Δ
		12"	300	287	2083	2099	2083	675	571.5	438	381	14.27	124	16-φ54	414	395	Δ
		14"	350	315	2286	2305	2286	750	635	489	419.1	15.88	134	16-φ50	471	441	Δ
16"	400	360	2422	2445	2422	825	704.8	546	469.9	17.48	146.5	16-φ67	498	456	Δ		
DBBQ47F-2500LB	2500	2"	50	42	762	765	762	235	171.4	133	101.6	7.92	51	8-φ29	149	123	Δ
		3"	80	62	1029	1153	1029	305	228.6	168	127	9.53	67	8-φ35	215	141	Δ
		4"	100	87	1143	1562	1143	355	273	203	157.18	11.13	76.5	8-φ42	245	206	Δ
		6"	150	131	1549	1559	1549	485	368.3	279	228.6	12.7	108	8-φ54	306	265	Δ
		8"	200	179	1880	1896	1880	550	438.2	340	279.4	14.27	127	12-φ54	361	336	Δ

Δ Please consult the factory:
 Note: The weight value is only for flanged valve. Please consult our factory for higher nominal diameter or weight. Any modification to size Hand, weight will not be notified otherwise.